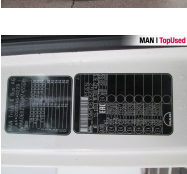


MAN TGX 18.500 4X2 BLS

SHV0010525



Body type	Tractor unit
1st reg.	04/2017
Power	368kW (500 HP)
Mileage	873197 km
Storage location	Braşov - MHS Truck Service

BASIC DATA

Brand	MAN
Model serie	TGX
Model variant	TGX TG2
Body type	Tractor unit (Standard)
Colours	white
Driver's cab	XLX
Berths	2 berths

TECHNICAL DATA

Power	368 kW (500 HP)
Fuel	Diesel
Gearbox type	Automatic
Wheel drive	4x2
Suspension	Leaf air suspension
Axles	2 axles

WEIGHTS AND MEASURES

GVW	18,000 kg
Rear overhang	800 mm
Wheel base	3600 mm
Fuel tank	AdBlue: 80 l Fuel tank: 580 l Fuel tank: 580 l
Emission category	Euro6

EQUIPMENT

Safety

- Antilock Braking System ABS
- Anti Slip Regulation ASR
- Electr. Stability Programm ESP
- Immobilizer
- Retarder
- Rear underrun
- Electr. and heated kerb mirror: right
- Electr./heated wide angle mirror

Comfort

- Adjustable steering column
- Electric window lift 2x
- Automatic climate control
- Driver's armrest
- Front seats adjustable in height
- Comfortable driver seat
- Additional heating
- Central locking with remote control
- Heated drivers seat
- Air-suspended driver seat
- Driver's lumbar support
- Isolated driver's cab
- DC/AC converter

Interior

- Board computer
- Multifunctional steering wheel
- Aluminum inlays
- Digital tachograph
- Carpet floor covering
- Cooling box

Light and sight

- Fog lights
- Tinted glass
- Headlight range control
- Cornering light
- Daytime running lights
- Ambient lighting

Audio & communication

- MAN Media Pack Navigation
- Radio
- Mobile phone preparation Bluetooth
- AUX & USB connector

Assistance systems

- Efficientcruise
- MAN BrakeMatic
- Brake assist: Emergency Brake Assist 2
- Lane-Guard-System LGS
- Hill Hold Control HHC
- Speed limiter

Exterior

- Electr. and heated rear view mirrors

- Low noise
- Rear differential lock
- Fifth wheel
- Spare wheel
- Cab Suspension
- Working lights
- Lifting roof (manual)
- Telematics system

Wheels and tyres

- Spare wheel carrier

Equipment packages

- Aero package
- Efficientline 3 package

Others

- front springs parabolic 7.5 t, rear air suspension 13 t, hub reduction rear axle Hypoid HY-1350, hypoid axle ratio i 2.53, fuel filter heating, cab insulation NORDIC, wiring for tank truck to ADR, ADR Typ AT, supply kit for semitrailer with lifting axle or moving-off aid, trailer socket 24V (7-7-pin)