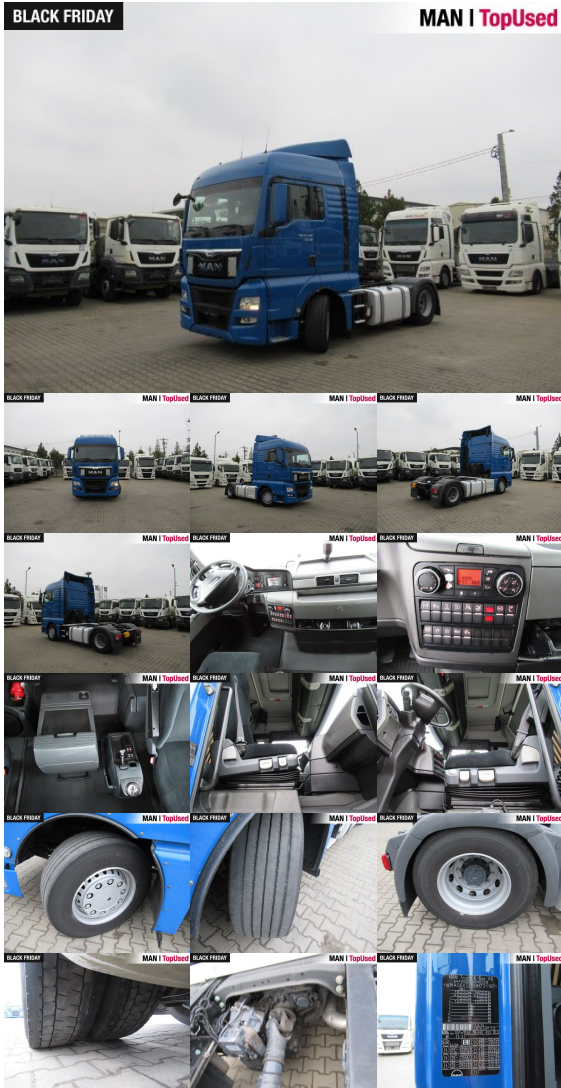


MAN TGX 18.440 4X2 BLS

SH03321122



Price **14,900 EUR** (net)

17,731 EUR (gross)

Offer Date 23.02.2025

Body type	Tractor unit
1st reg.	02/2017
Power	324kW (441 HP)
Mileage	664774 km
Storage location	Otopeni - MHS Truck Service

BASIC DATA

Brand	MAN
Model serie	TGX
Model variant	TGX TG2
Body type	Tractor unit (Standard)
Colours	blue
Driver's cab	XLX
Berths	2 berths

TECHNICAL DATA

Power	324 kW (441 HP)
Fuel	Diesel
Gearbox type	Semiautomatic
Wheel drive	4x2
Suspension	Leaf air suspension
Axles	2 axles

WEIGHTS AND MEASURES

GVW	18,000 kg
Rear overhang	800 mm
Wheel base	3600 mm
Fuel tank	AdBlue: 60 l Fuel tank: 580 l Fuel tank: 580 l
Emission category	Euro6

EQUIPMENT

Safety

- Antilock Braking System ABS
- Anti Slip Regulation ASR
- Electr. Stability Programm ESP
- Tyre Pressure Control System TPM
- Immobilizer
- Intarder
- Rear underrun
- Kerb mirror: right
- Heated wide angle mirror

Interior

- Board computer
- Multifunctional steering wheel
- Digital tachograph
- Carpet floor covering
- Cooling box

Exterior

- Self-levelling suspension
- Electr. and heated rear view mirrors
- Low noise
- Rear differential lock
- Fifth wheel
- 1x15 pin plug
- Working lights
- Telematics system

Assistance systems

- Efficientcruise
- MAN BrakeMatic

Comfort

- Adjustable steering column
- Electric window lift 2x
- Automatic climate control
- Driver's armrest
- Electr. lifting sunroof
- Comfortable front seats
- Additional heating
- Central locking with remote control
- Air-suspended front seats
- Isolated driver's cab
- DC/AC converter

Light and sight

- Fog lights
- Tinted glass
- Headlight range control
- Cornering light
- Daytime running lights

Audio & communication

- Radio
- Mobile phone preparation Bluetooth
- Soundsystem
- AUX & USB connector

- Brake assist: Emergency Brake Assist 2
- Lane-Guard-System LGS
- Hill Hold Control HHC
- Speed limiter

Equipment packages

- Aero package
- Efficientline 2 package

Wheels and tyres

- Spare wheel carrier