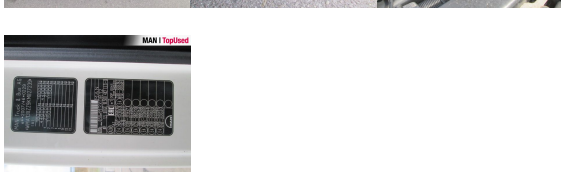


# MAN TGX 18.500 4X2 LLS-U

SH05320724



Preț

**36,900 EUR** (net)**43,911 EUR** (gross)

Body type	Tractor unit
1st reg.	05/2019
Power	368kW (500 HP)
Mileage	626876 km
Storage location	Brașov - MHS Truck Service

## BASIC DATA

Brand	MAN
Model serie	TGS
Model variant	TGS TG2
Body type	Tractor unit (Mega)
Colours	white
Driver's cab	XXL
Berths	2 berths

## TECHNICAL DATA

Power	368 kW (500 HP)
Fuel	Diesel
Gearbox type	Automatic
Wheel drive	4x2
Suspension	Air suspension
Axles	2 axles

## WEIGHTS AND MEASURES

GVW	18,000 kg
Rear overhang	800 mm
Wheel base	3600 mm
Fuel tank	AdBlue: 60 l Fuel tank: 480 l Fuel tank: 480 l
Emission category	Euro6

## EQUIPMENT

### Safety

- Antilock Braking System ABS
- Anti Slip Regulation ASR
- Electr. Stability Programm ESP
- Tyre Pressure Control System TPM
- Immobilizer
- Retarder
- Rear underrun
- Kerb mirror: right
- Heated wide angle mirror

### Interior

- Board computer
- Multifunctional steering wheel
- Aluminum inlays
- Digital tachograph
- Carpet floor covering
- Cooling box

### Exterior

- Self-levelling suspension
- Electr. and heated rear view mirrors
- Low noise
- Rear differential lock
- Fifth wheel
- 1x15 pin plug
- Cab Suspension
- Working lights
- Axle load indicator

### Comfort

- Adjustable steering column
- Electric window lift 2x
- Automatic climate control
- Driver's armrest
- Electr. lifting sunroof
- Front seats adjustable in height
- Comfortable driver seat
- Additional heating
- Central locking with remote control
- Air-suspended driver seat
- Cup holder
- Isolated driver's cab
- DC/AC converter

### Light and sight

- Fog lights
- Tinted glass
- Cornering light
- Daytime running lights

- Information and service system
- RIO Box

### **Assistance systems**

- Efficientcruise
- MAN BrakeMatic
- Brake assist
- Lane-Guard-System LGS
- Hill Hold Control HHC
- Speed limiter

### **Wheels and tyres**

- Spare wheel carrier

### **Audio & communication**

- MAN Media Pack Navigation
- Radio
- Mobile phone preparation Bluetooth
- AUX & USB connector

### **Equipment packages**

- Aero package
- Efficientline 3 package