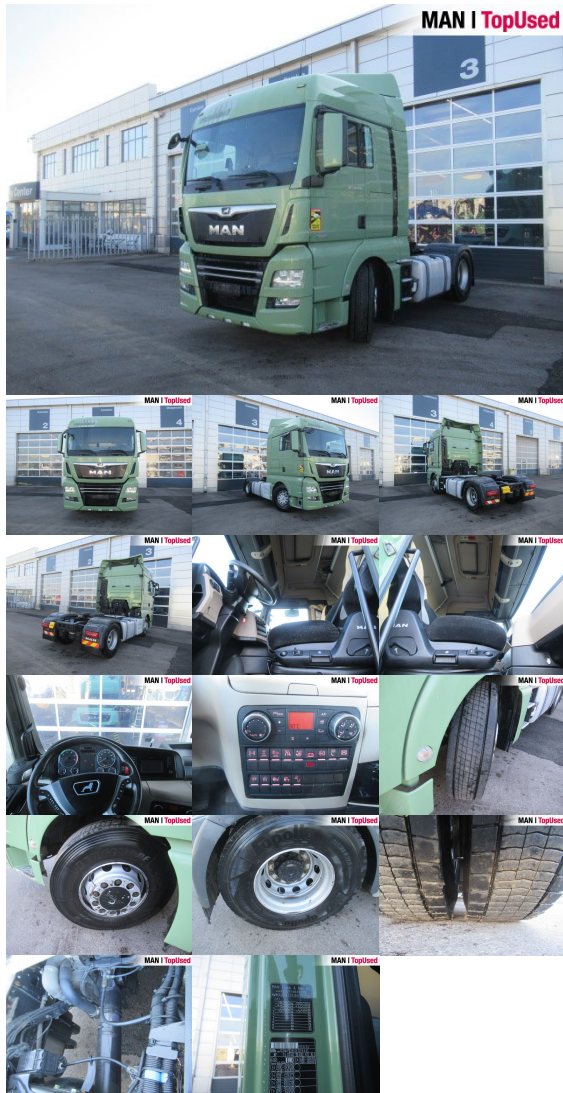


# MAN TGX 18.500 4X2 BLS

SHV0021124



Price **24,000 EUR** (net)

**28,560 EUR** (gross)

Offer Date 01.04.2025

Body type	Tractor unit
1st reg.	01/2018
Power	368kW (500 HP)
Mileage	629372 km
Storage location	Otopeni - MHS Truck Service

## BASIC DATA

Brand	MAN
Model serie	TGX
Model variant	TGX TG2
Body type	Tractor unit (Standard)
Colours	green
Driver's cab	XLX
Berths	2 berths

## TECHNICAL DATA

Power	368 kW (500 HP)
Fuel	Diesel
Gearbox type	Automatic
Wheel drive	4x2
Suspension	Leaf air suspension
Axles	2 axles

## WEIGHTS AND MEASURES

GVW	18,000 kg
Rear overhang	800 mm
Wheel base	3600 mm
Fuel tank	AdBlue: 60 l Fuel tank: 580 l Fuel tank: 580 l
Emission category	Euro6

## EQUIPMENT

### Safety

- Antilock Braking System ABS
- Anti Slip Regulation ASR
- Electr. Stability Programm ESP
- Tyre Pressure Control System TPM
- Immobilizer
- Retarder
- Rear underrun
- Kerb mirror: right
- Heated wide angle mirror

### Interior

- Board computer
- Multifunctional steering wheel
- Aluminum inlays
- Digital tachograph
- Carpet floor covering
- Cooling box

### Exterior

- Self-levelling suspension
- Electr. and heated rear view mirrors
- Low noise
- Rear differential lock
- Fifth wheel
- 1x15 pin plug
- Cab Suspension
- Working lights
- Axle load indicator

### Comfort

- Adjustable steering column
- Electric window lift 2x
- Automatic climate control
- Driver's armrest
- Comfortable front seats
- Additional heating
- Central locking with remote control
- Air-suspended front seats
- Isolated driver's cab
- DC/AC converter

### Light and sight

- Fog lights
- Rain sensor
- Tinted glass
- Headlight range control
- Automatic headlights
- Cornering light
- LED daytime running lights
- Light sensor
- Ambient lighting

- Lifting roof (manual)
- Preparation Telematics system

### Assistance systems

- Cruise control
- MAN BrakeMatic
- Brake assist: Emergency Brake Assist 2
- Lane-Guard-System LGS
- Hill Hold Control HHC
- Speed limiter

### Wheels and tyres

- Spare wheel carrier

### Audio & communication

- Radio
- Mobile phone preparation Bluetooth
- AUX & USB connector

### Equipment packages

- Aero package
- Efficientline 3 package
- Safety light & sight package