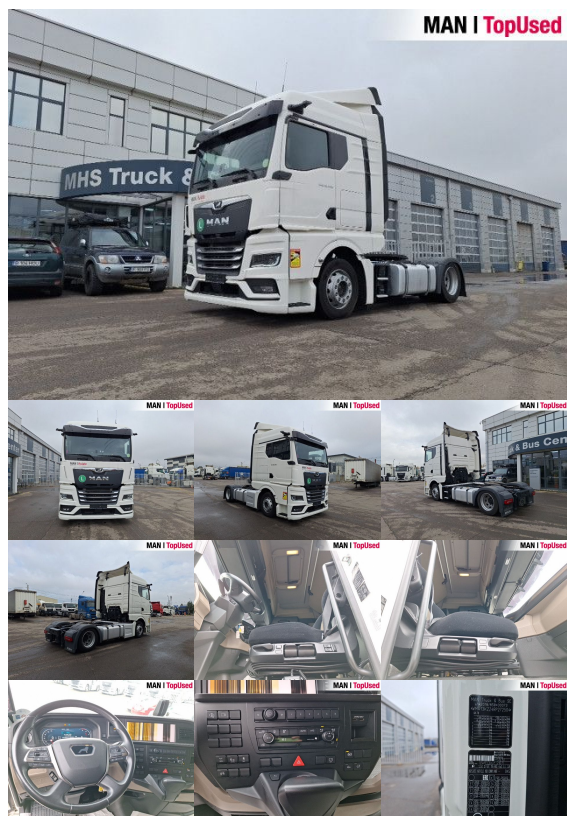


MAN TGX 18.480 4X2 LL SA

SH02351025



Body type	Tractor unit
1st reg.	09/2024
Power	353kW (480 HP)
Mileage	98751 km
Storage location	Otopeni - MHS Truck Service

BASIC DATA

Brand	MAN
Model serie	TGX
Model variant	TGX TG3
Body type	Tractor unit (Mega)
Colours	white
Driver's cab	GM

TECHNICAL DATA

Power	353 kW (480 HP)
Fuel	Diesel
Gearbox type	Automatic
Wheel drive	4x2
Suspension	Pneumatic air suspension
Axles	2 axles

WEIGHTS AND MEASURES

GVW	18,000 kg
Rear overhang	800 mm
Wheel base	3600 mm
Fuel tank	AdBlue: 80 l Fuel tank: 480 l Fuel tank: 480 l
Emission category	Euro6

Price	78,990 EUR (net)
	95,578 EUR (gross)
Offer Date	29.12.2025

EQUIPMENT

Safety

- Antilock Braking System ABS
- Anti Slip Regulation ASR
- Electr. Stability Programm ESP
- Rear underrun
- Trailer Brake Connection

Comfort

- Adjustable steering column
- Climatronic
- Front armrest
- Comfortable front seats
- Additional heating
- Central locking with remote control
- Heated drivers seat
- Air-suspended front seats
- Driver's lumbar support
- Stationary air conditioning
- Cup holder
- Control panel MAN EasyControl

Interior

- Multifunctional leather steering wheel
- Digital tachograph
- Sun visor
- Refrigerator

Light and sight

- Fog lights
- Rain sensor
- LED headlights
- Tinted glass
- Headlight range control
- Automatic headlights
- Cornering light
- LED daytime running lights
- Light sensor

Audio & communication

- MAN Media Truck Advanced
- MAN SmartSelect
- Soundsystem
- Smartphone app integration

Assistance systems

- Automatic distance control ACC with stop and go
- Electronic Brake System EBS
- Brake assist
- Lane Departure Warning System LDWS
- Hill Hold Control HHC
- High beam assist
- efficientroll
- Speed limiter

Exterior

- Heated rear view mirror
- Roof spoiler
- Rear differential lock
- Twin tyres
- Fifth wheel maintenance-free
- 1x15 pin plug
- Antispray
- Cab Suspension: Cab mount Comfort
- Working lights
- Axle load indicator
- Lifting roof (manual)
- Telematics system
- Digital exterior mirrors MAN OptiView

Others

- MAN EVBec high-performance engine brake, stages possible, Professional instrumentation 12.3", Double tank connection

Equipment packages

- Safety package