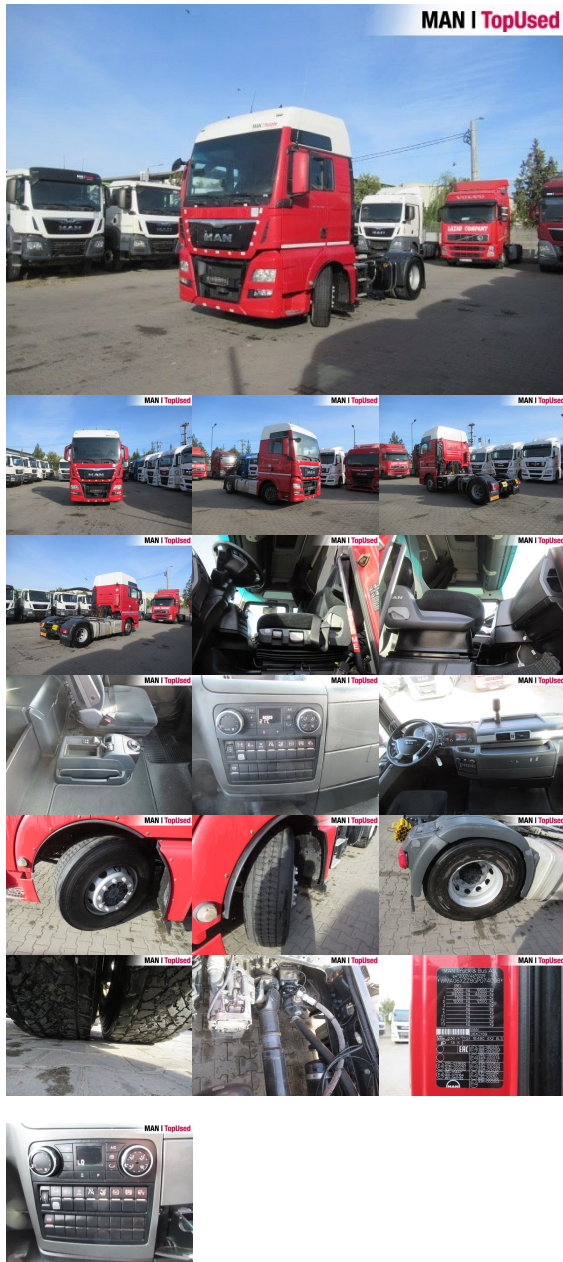


MAN TGX 18.480 4X2 BLS

SH03391122



Preț

14,500 EUR (net)**17,255 EUR** (gross)

Body type	Tractor unit
1st reg.	03/2016
Power	353kW (480 HP)
Mileage	798282 km
Storage location	Otopeni - MHS Truck Service

BASIC DATA

Brand	MAN
Model serie	TGX
Model variant	TGX TG2
Body type	Tractor unit (Standard)
Colours	red
Driver's cab	XXL
Berths	2 berths

TECHNICAL DATA

Power	353 kW (480 HP)
Fuel	Diesel
Gearbox type	Semiautomatic
Wheel drive	4x2
Suspension	Leaf air suspension
Axles	2 axles

WEIGHTS AND MEASURES

GVW	18,000 kg
Rear overhang	800 mm
Wheel base	3600 mm
Fuel tank	AdBlue: 80 l Fuel tank: 580 l Fuel tank: 580 l
Emission category	Euro6

EQUIPMENT

Safety

- Antilock Braking System ABS
- Anti Slip Regulation ASR
- Electr. Stability Programm ESP
- Immobilizer
- Intarder
- Rear underrun
- Electr. and heated kerb mirror: right, left
- Electr./heated wide angle mirror

Interior

- Board computer
- Multifunctional steering wheel
- Digital tachograph
- Carpet floor covering

Audio & communication

- Radio/CD
- Mobile phone preparation Bluetooth
- AUX & USB connector

Exterior

- Electr. and heated rear view mirrors

Comfort

- Adjustable steering column
- Electric window lift 2x
- Automatic climate control
- Driver's armrest
- Electr. lifting sunroof
- Comfortable driver seat
- Additional heating
- Central locking with remote control
- Heated drivers seat
- Air-suspended driver seat
- Driver's lumbar support
- Isolated driver's cab
- DC/AC converter

Light and sight

- Fog lights
- Tinted glass
- Headlight range control
- Cornering light
- Daytime running lights
- Ambient lighting

Assistance systems

- Cruise control
- MAN BrakeMatic
- Brake assist: Emergency Brake Assist 2
- Lane-Guard-System LGS
- Hill Hold Control HHC
- Speed limiter

- Low noise
- Rear differential lock
- Fifth wheel
- Spare wheel
- Working lights
- Telematics system

Wheels and tyres

- Spare wheel carrier