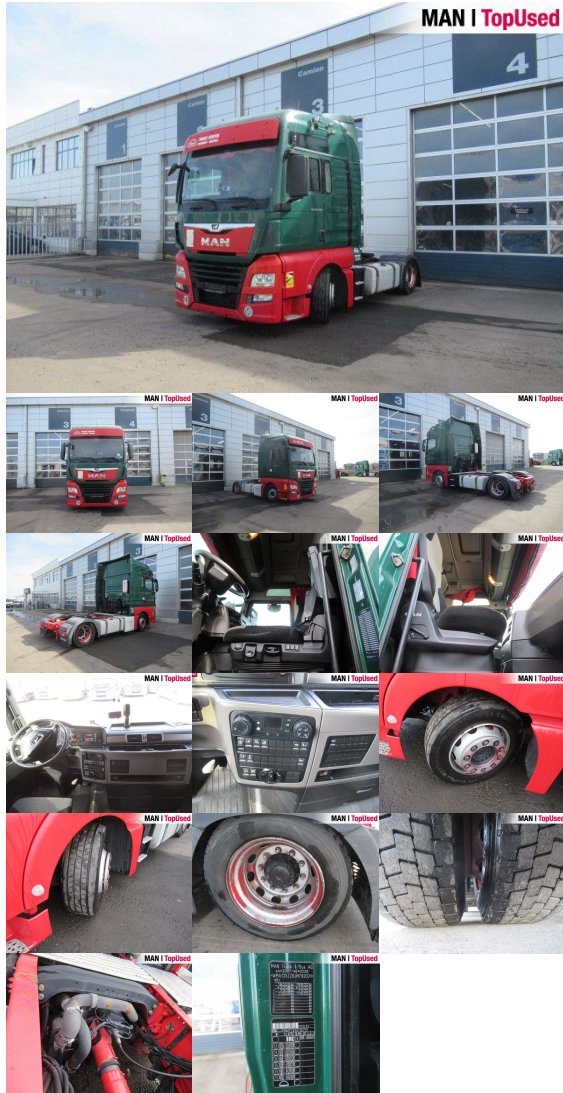


MAN TGX 18.460 4X2 LLS-U

SH00150225



| | |
|------------------|-----------------------------|
| Body type | Tractor unit |
| 1st reg. | 05/2018 |
| Power | 338kW (460 HP) |
| Mileage | 651008 km |
| Storage location | Otopeni - MHS Truck Service |

BASIC DATA

| | |
|---------------|---------------------|
| Brand | MAN |
| Model serie | TGX |
| Model variant | TGX TG2 |
| Body type | Tractor unit (Mega) |
| Colours | green |
| Driver's cab | XXL |
| Berths | 2 berths |

TECHNICAL DATA

| | |
|--------------|-----------------|
| Power | 338 kW (460 HP) |
| Fuel | Diesel |
| Gearbox type | Automatic |
| Wheel drive | 4x2 |
| Suspension | Air suspension |
| Axles | 2 axles |

Price **16,990 EUR** (net)
20,558 EUR (gross)

Offer Date 25.05.2026

WEIGHTS AND MEASURES

| | |
|-------------------|--|
| GVW | 18,000 kg |
| Rear overhang | 800 mm |
| Wheel base | 3600 mm |
| Fuel tank | AdBlue: 60 l Fuel tank: 480 l Fuel tank: 480 l |
| Emission category | Euro6 |

EQUIPMENT

Safety

- Antilock Braking System ABS
- Anti Slip Regulation ASR
- Electr. Stability Programm ESP
- Immobilizer
- Retarder
- Rear underrun
- Electr. and heated kerb mirror: right
- Electr./heated wide angle mirror

Comfort

- Adjustable steering column
- Electric window lift 2x
- Air conditioning
- Driver's armrest
- Electr. lifting sunroof
- Comfortable driver seat
- Additional heating
- Central locking with remote control
- Heated drivers seat
- Air-suspended driver seat
- Driver's lumbar support
- Cup holder front
- Isolated driver's cab
- DC/AC converter

Interior

- Board computer
- Multifunctional steering wheel
- Aluminum inlays
- Digital tachograph
- Sun visor
- Carpet floor covering
- Cooling box

Light and sight

- Fog lights
- Tinted glass
- Cornering light
- Ambient lighting

Exterior

- Self-levelling suspension
- Electr. and heated rear view mirrors
- Low noise
- Rear differential lock
- Fifth wheel
- 1x15 pin plug
- Spare wheel
- Cab Suspension
- Working lights

RIO Box**Assistance systems**

- Adaptive Cruise Control ACC
- MAN BrakeMatic
- Brake assist: Emergency Brake Assist 2
- Lane-Guard-System LGS
- Hill Hold Control HHC
- Speed limiter

Wheels and tyres

- Spare wheel carrier

Audio & communication

- Radio
- AUX & USB connector

Equipment packages

- Aero package
- Safety plus package

Others

- front air suspension 7.5 t, rear air suspension 11.5 t, hub reduction rear axle Hypoid HY-1350, hypoid axle ratio i 2.85, fuel filter heating, cab insulation NORDIC, cross member for trailer coupling, trailer socket 24V (15-pin)