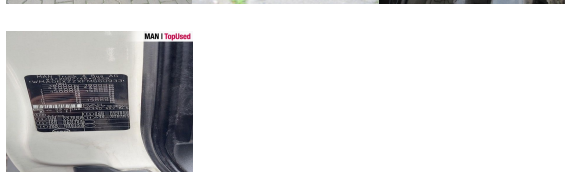


MAN TGX 18.440 4X2 BLS

SH03950224



Preț

18,900 EUR (net)**22,491 EUR** (gross)

| | |
|------------------|-----------------------------|
| Body type | Tractor unit |
| 1st reg. | 10/2014 |
| Power | 324kW (441 HP) |
| Mileage | 881298 km |
| Storage location | Otopeni - MHS Truck Service |

BASIC DATA

| | |
|---------------|-------------------------|
| Brand | MAN |
| Model serie | TGX |
| Model variant | TGX TG2 |
| Body type | Tractor unit (Standard) |
| Colours | white |
| Driver's cab | XLX |
| Berths | 2 berths |

TECHNICAL DATA

| | |
|--------------|---------------------|
| Power | 324 kW (441 HP) |
| Fuel | Diesel |
| Gearbox type | Semiautomatic |
| Wheel drive | 4x2 |
| Suspension | Leaf air suspension |
| Axles | 2 axles |

WEIGHTS AND MEASURES

| | |
|-------------------|--|
| GVW | 18,000 kg |
| Rear overhang | 800 mm |
| Wheel base | 3600 mm |
| Fuel tank | AdBlue: 60 l Fuel tank: 580 l Fuel tank: 580 l |
| Emission category | Euro6 |

EQUIPMENT

Safety

- Antilock Braking System ABS
- Anti Slip Regulation ASR
- Electr. Stability Programm ESP
- Immobilizer
- Rear underrun
- Kerb mirror: right
- Heated wide angle mirror

Interior

- Board computer
- Multifunctional steering wheel
- Digital tachograph
- Carpet floor covering
- Cooling box

Exterior

- Self-levelling suspension
- Electr. and heated rear view mirrors
- Low noise
- Rear differential lock
- Fifth wheel
- Spare wheel
- Working lights
- Lifting roof (manual)
- Telematics system

Assistance systems

Comfort

- Adjustable steering column
- Electric window lift 2x
- Automatic climate control
- Driver's armrest
- Comfortable front seats
- Additional heating
- Central locking with remote control
- Air-suspended front seats
- Stationary air conditioning
- Isolated driver's cab
- DC/AC converter

Light and sight

- Fog lights
- Tinted glass
- Headlight range control
- Cornering light
- Daytime running lights
- Ambient lighting

Audio & communication

- Radio/CD
- AUX & USB connector

- Cruise control
- MAN BrakeMatic
- Hill Hold Control HHC
- Speed limiter

Equipment packages

- Aero package
- Efficientline package

Wheels and tyres

- Spare wheel carrier